

# Frank Lloyd Wright on the West Coast: A Journey through Architectural Brilliance

Frank Lloyd Wright, the most influential architect of the 20th century, left an indelible mark on the West Coast, designing a diverse array of homes, museums, and public buildings that epitomize his pioneering spirit and innovative designs. This comprehensive article takes you on a captivating journey through these architectural masterpieces, exploring their unique features, historical significance, and enduring legacy.



## Frank Lloyd Wright on the West Coast by Mark Anthony Wilson

★★★★☆ 4.8 out of 5

Language : English  
File size : 74573 KB  
Text-to-Speech : Enabled  
Screen Reader : Supported  
Enhanced typesetting : Enabled  
Print length : 224 pages



## Taliesin West: Wright's Desert Oasis



Nestled in the Sonoran Desert of Scottsdale, Arizona, Taliesin West served as both Wright's winter home and the campus of the Frank Lloyd Wright School of Architecture. Inspired by the surrounding desert landscape, Taliesin West seamlessly blends indoor and outdoor spaces, featuring cantilevered roofs, built-in furniture, and expansive windows that frame the stunning desert views.

### **Marin County Civic Center: A Monument to Organic Architecture**



Commissioned by the Marin County government, the Marin County Civic Center in San Rafael, California, is a stunning example of Wright's organic architecture. The complex features a series of interconnected buildings that cascade down a hillside, their curved forms and natural materials harmonizing with the surrounding landscape. The iconic rotunda serves as a central gathering space and the focal point of the complex.

### **Hollyhock House: A Mayan-Inspired Masterpiece**



Originally designed as a residence for oil heiress Aline Barnsdall, Hollyhock House in Los Angeles, California, showcases Wright's fascination with Mayan and Aztec architecture. The building features a series of stepped terraces, intricate carvings, and colorful tilework, creating a unique and unforgettable architectural experience.

### **Millard House: A Prairie-Style Gem**



Located in Pasadena, California, the Millard House is a quintessential example of Wright's Prairie-style architecture. The horizontal lines, overhanging eaves, and open floor plan create a sense of spaciousness and harmony with the surrounding gardens. The house features exquisite woodwork, built-in furniture, and stained glass windows that add to its charm and elegance.

## **Hanna House: A Modernist Retreat**



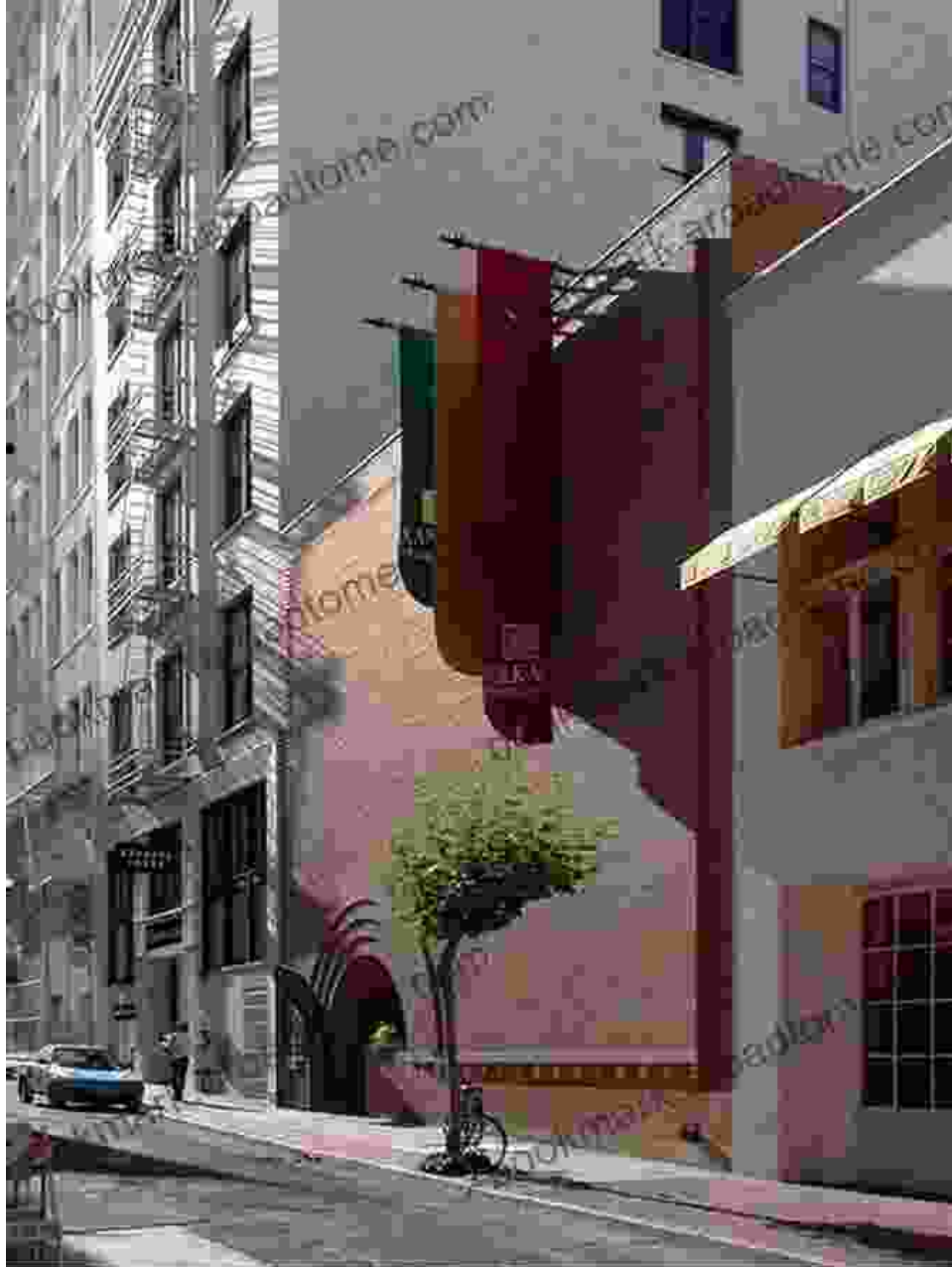
Designed for newspaper publisher Paul Hanna, the Hanna House in Palo Alto, California, represents Wright's transition towards a more modernist style. The house features a flat roof, asymmetrical windows, and an open floor plan that fosters a sense of light and transparency. The innovative use of glass and steel blurs the boundaries between indoor and outdoor spaces.

## **Storer House: A California Coastal Retreat**



Nestled on the bluffs overlooking the Pacific Ocean in Los Angeles, California, the Storer House is a testament to Wright's ability to create harmonious relationships between buildings and the natural environment. The house features a series of terraces and balconies that extend the living spaces outdoors, offering breathtaking views of the ocean and surrounding landscape.

### **V.C. Morris Gift Shop: A Desert Landmark**



Standing out against the rugged backdrop of the Anza-Borrego Desert in Borrego Springs, California, the V.C. Morris Gift Shop is a whimsical and eye-catching example of Wright's commercial architecture. The building features a hyperbolic paraboloid roof, resembling a folded paper fan, and is adorned with colorful mosaics and stained glass windows.

### **Guggenheim Museum: A Beacon of Modernism**





Although not located on the West Coast, the Solomon R. Guggenheim Museum in New York City is a significant example of Wright's influence on modern architecture. The museum's iconic cylindrical form and open-spiral interior provide a unique and immersive experience for visitors.

### **Neutra House: A Case Study in Modern Living**



Designed by architect Rudolf Neutra, a disciple of Frank Lloyd Wright, the Neutra House in Silver Lake, Los Angeles, is a classic example of mid-century modern architecture. The house features a steel frame, floor-to-ceiling windows, and an open floor plan that blurs the boundaries between indoor and outdoor living.

### **Eames House: A Symbol of Post-War Design**



Designed by Charles and Ray Eames, a prominent husband-and-wife team in the field of design, the Eames House in Pacific Palisades, Los Angeles, is a testament to the post-war era's embrace of modernism and functionality. The house features a simple, cubic form, a steel frame, and extensive use of glass, creating a light-filled and open living space.

From the desert landscapes of Arizona to the coastal bluffs of California, Frank Lloyd Wright's architectural legacy on the West Coast is a diverse

and enduring testament to his genius. His unwavering pursuit of organic design, innovative use of materials, and ability to create harmonious relationships between buildings and their environments continue to inspire architects and design enthusiasts alike. Through this journey through Wright's masterpieces, we gain a deeper appreciation for his architectural brilliance and the lasting impact he has had on the world of design.



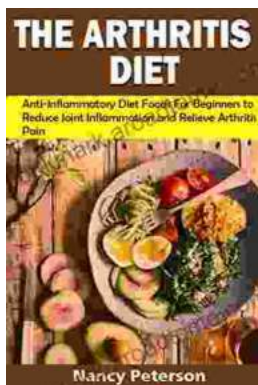
## Frank Lloyd Wright on the West Coast by Mark Anthony Wilson

★★★★☆ 4.8 out of 5

Language : English  
File size : 74573 KB  
Text-to-Speech : Enabled  
Screen Reader : Supported  
Enhanced typesetting : Enabled  
Print length : 224 pages

FREE

DOWNLOAD E-BOOK



## Anti-Inflammatory Diet Foods For Beginners: Reduce Joint Inflammation and Improve Overall Health

: Unveiling the Healing Potential of Food In a world where chronic inflammation wreaks havoc on our bodies, the anti-inflammatory diet emerges as a...



## **The Dissolution of the Monasteries: A New History Unraveling the Intricacies of a Pivotal Reformation**

: A Prelude to Religious Turmoil In the annals of English history, the Dissolution of the Monasteries stands as a defining event, a complex and...